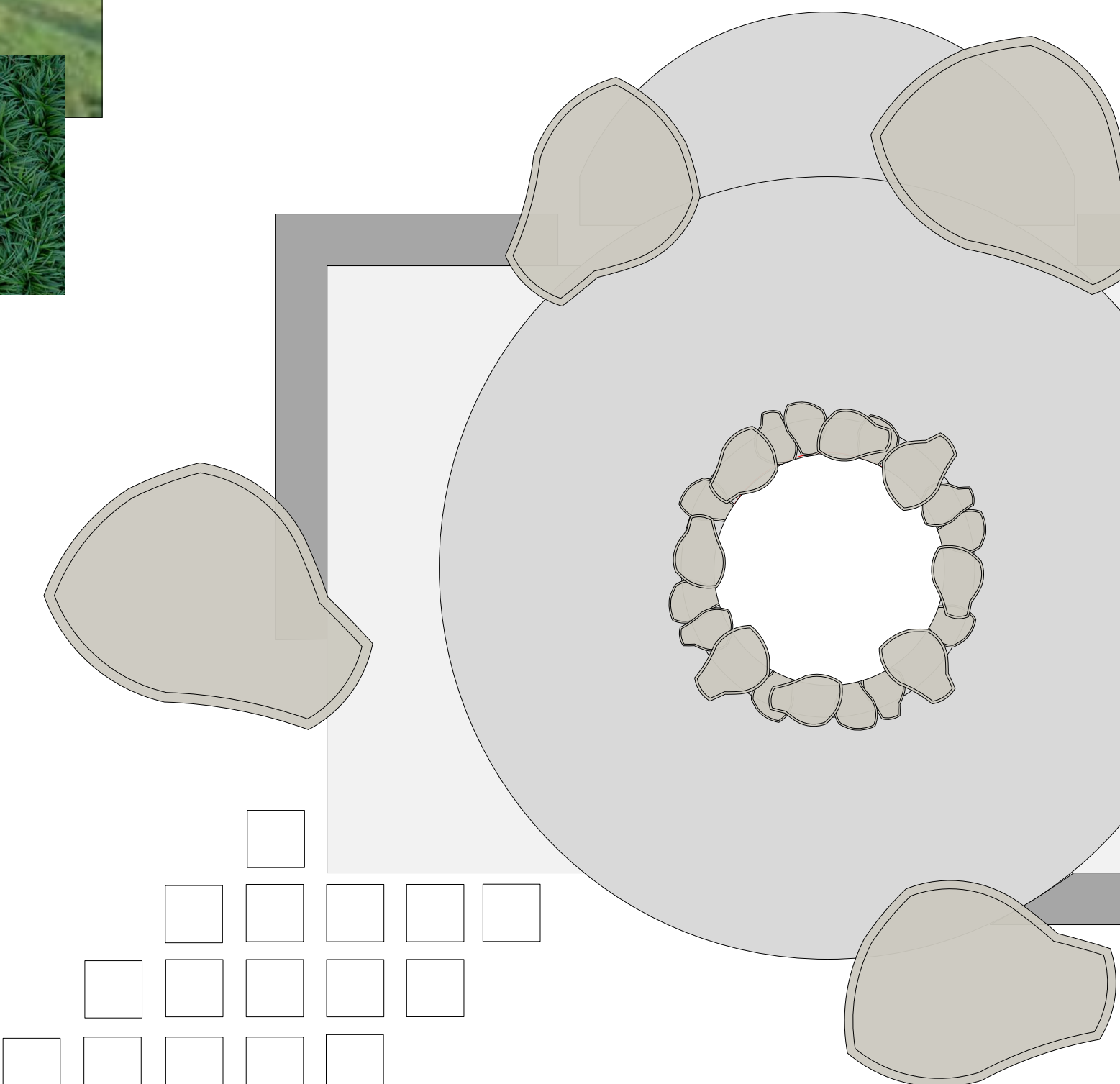
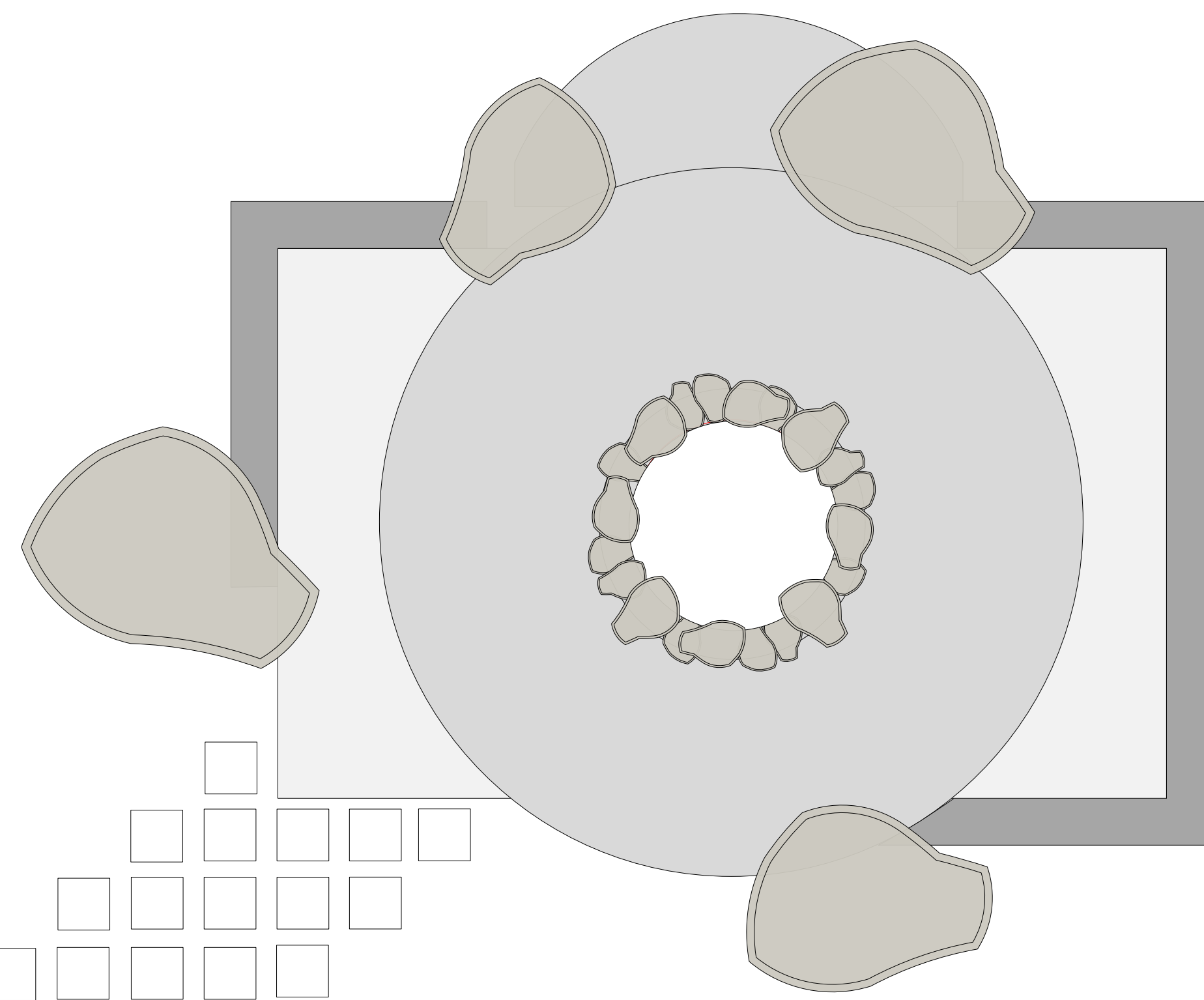


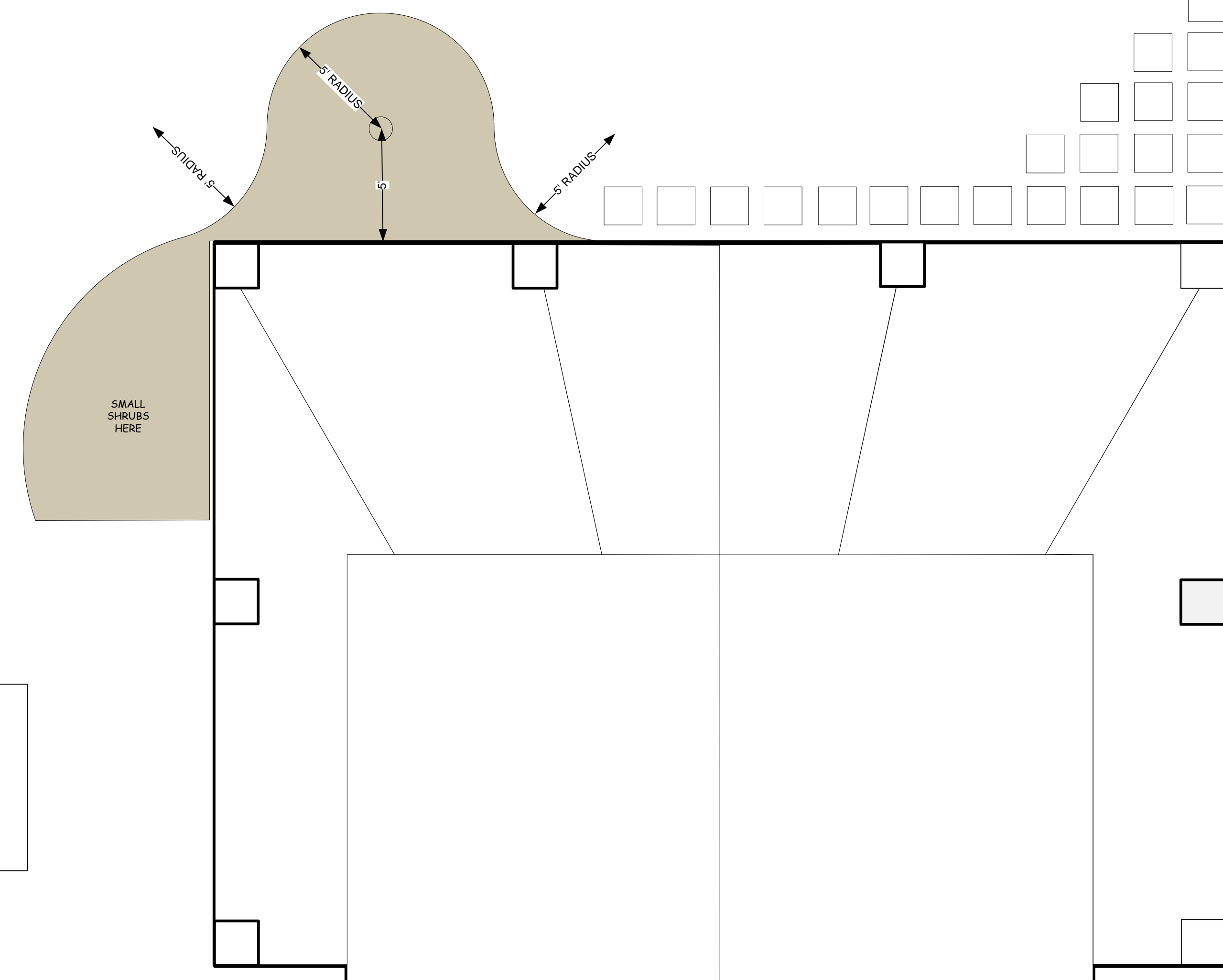
- (1) Jap Maple
- (16) Dwarf Mondo Trays
- (2) Smaller boulders (3' size)
- 1" size stone edge (5 bags)



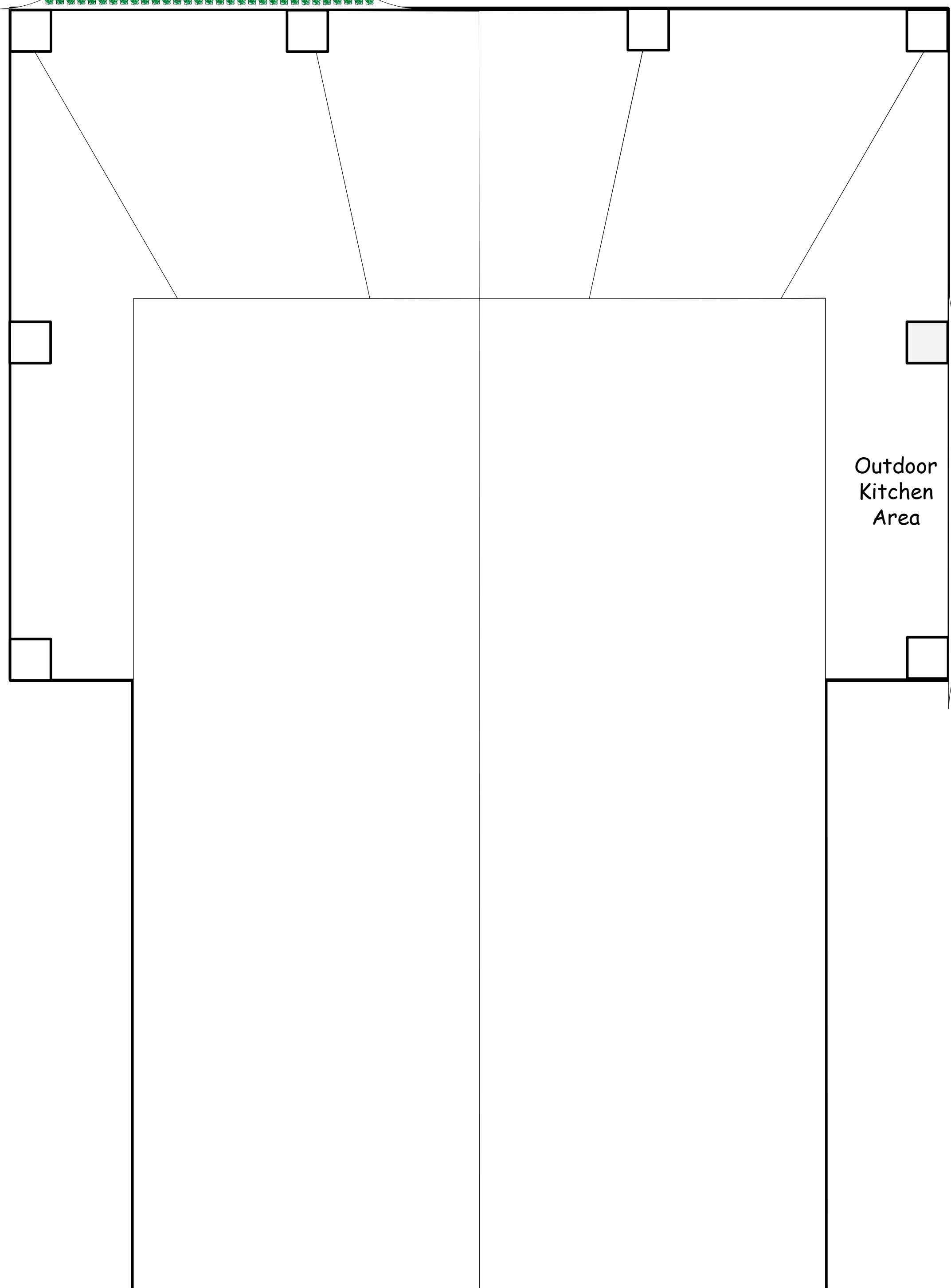
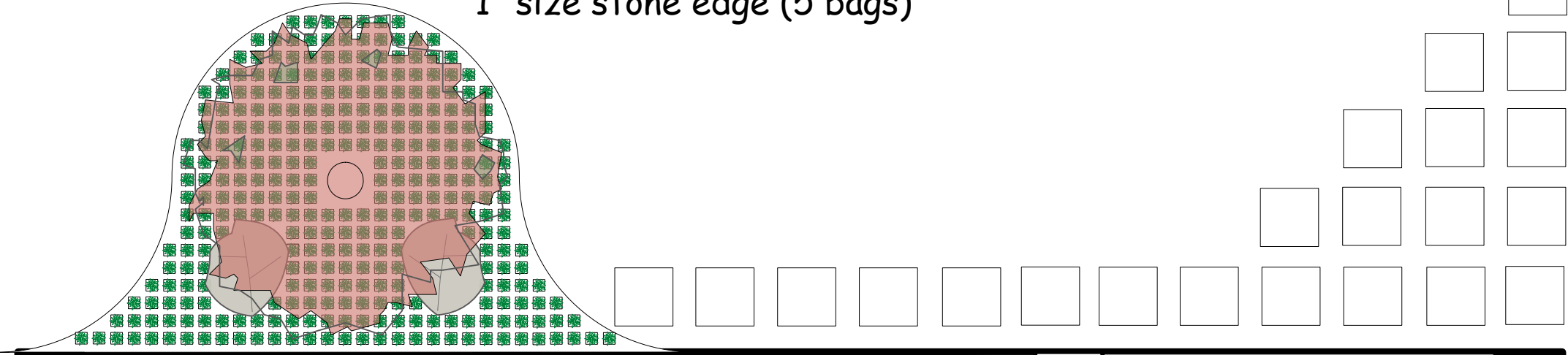
LITTLE RIVER
SCALE 1/4" = 1'

- (1) Jap Maple
- (16) Dwarf Mondo Trays
- (2) Smaller boulders (3' size)
- 1" size stone edge (5 bags)

Outdoor Kitchen Area



(32) trays of dwarf mondo - \$1,120
 (2) Jap Maples - \$360
 (4) smaller 3' boulders - \$160
 (10) bags of 1" stone for edge - \$70
Cost for these 2 beds = \$1,710





Mature Height:	2-3 ft.
Mature Width:	2-3 ft.
Sunlight:	Full Sun
Growth Rate:	Moderate to Fast
Botanical Name:	Miscanthus sinensis Bandwidth
Does Not Ship To:	AZ
Grows Well In Zones:	5-9 outdoors
Your Growing Zone:	8

Miscanthus 'Bandwidth'



Mature Height:	3-4 ft.
Mature Width:	3-4 ft.
Sunlight:	Full-Part Sun
Growth Rate:	Fast
Botanical Name:	Muhlenbergia capillaris
Does Not Ship To:	AZ
Grows Well In Zones:	6-9 outdoors
Your Growing Zone:	8

Pink Muhly Grass



Mature Height:	1-2 ft.
Mature Width:	3-4 ft.
Sunlight:	Full-Partial
Growth Rate:	Slow
Botanical Name:	Gardenia jasminoides 'Radicans'
Does Not Ship To:	AZ
Grows Well In Zones:	7-10 outdoors
Your Growing Zone:	8

Dwarf Radicans Gardenia



Family: Pittosporaceae Genus: Pittosporum
 Plant type: Ground cover, Shrub
 Biomes/Growing conditions: Dry Shade, Hot Aspects, Low Water/No Water, Oregon Coast
 Sun exposure: Full Sun, Part Shade
 USDA Hardiness zone: Z7b 10° to 5°F
 Foliage color: Dark Green, Mid Green
 Foliage season: Evergreen

Useful somewhat formal looking ground cover shrub that is always good looking. To 2' x 3' slowly the dense deep green foliage is arranged handsomely. In May/June clusters of off white fragrant flowers appear- Not as heavily as the species but pretty none-the-less. Excels in hot dry situations- including the reflected heat of walls. Hardier to cold than generally thought. My 10 year old plants have never been damaged by cold- down below 10°F. Avoid freezing cold exposed sites, however. Useful as a massed weed smothering ground cover. Deep green uniform appearance of foliage is just what many people are seeking. Drought tolerant. Evergreen. Hardy to 5°F when established. Excellent appearance year round.

Pittosporum tobira 'Wheeler's Dwarf'

(3) trays of Liriope - \$120
 (5) medium shrubs - \$250
 \$370



HARDINESS ZONE:	6-9
MATURE HEIGHT:	4 to 5 feet
MATURE WIDTH:	4 to 5 feet
CLASSIFICATION:	evergreen shrub
SUNLIGHT:	Full Sun to Part Sun
HABIT:	Dwarf, Densely branched, Mounding
FOLIAGE:	Dark Green foliage
FLOWER COLOR:	Inconspicuous
PRUNING SEASON:	Prune in late spring to maintain shape
SOIL CONDITION:	Any well drained soil
WATER REQUIREMENTS:	Water well until established
USES:	Extremely attractive when used as in the mixed border, rock gardens, or planted in mass

Cryptomeria Globasa Nana



Zones: 2-8
Exposure: Full sun to partial shade
Growth habit: Dwarf compact habit
Height/Spread: 10 to 18 inches tall, 12 to 24 inches wide

Finely textured green needles grow on dense mounding plants. The slow growth rate, just 1 inch per year, makes this dwarf evergreen conifer suitable for a small space, rock garden, container, or massed in the landscape. Deer resistant and moderately drought tolerant.

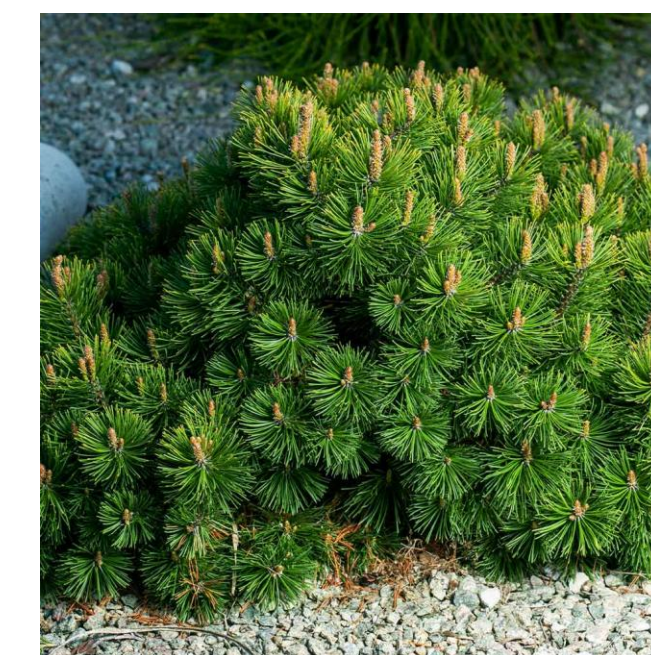
'Little Gem' Norway Spruce'



Zones: 5-9
Exposure: Full sun to shade
Growth habit: Mounding arching habit
Height/Spread: 2 to 3 feet tall and wide
Bloom time: Early summer

This native deciduous shrub produces fragrant white flower spikes on graceful arching stems. Oval green foliage turns brilliant orange-red in fall. Plant this low-maintenance shrub in a woodland border, native garden, or mass in the landscape. Learn more about [growing sweetspire shrubs](#).

'Little Henry' Sweetspire



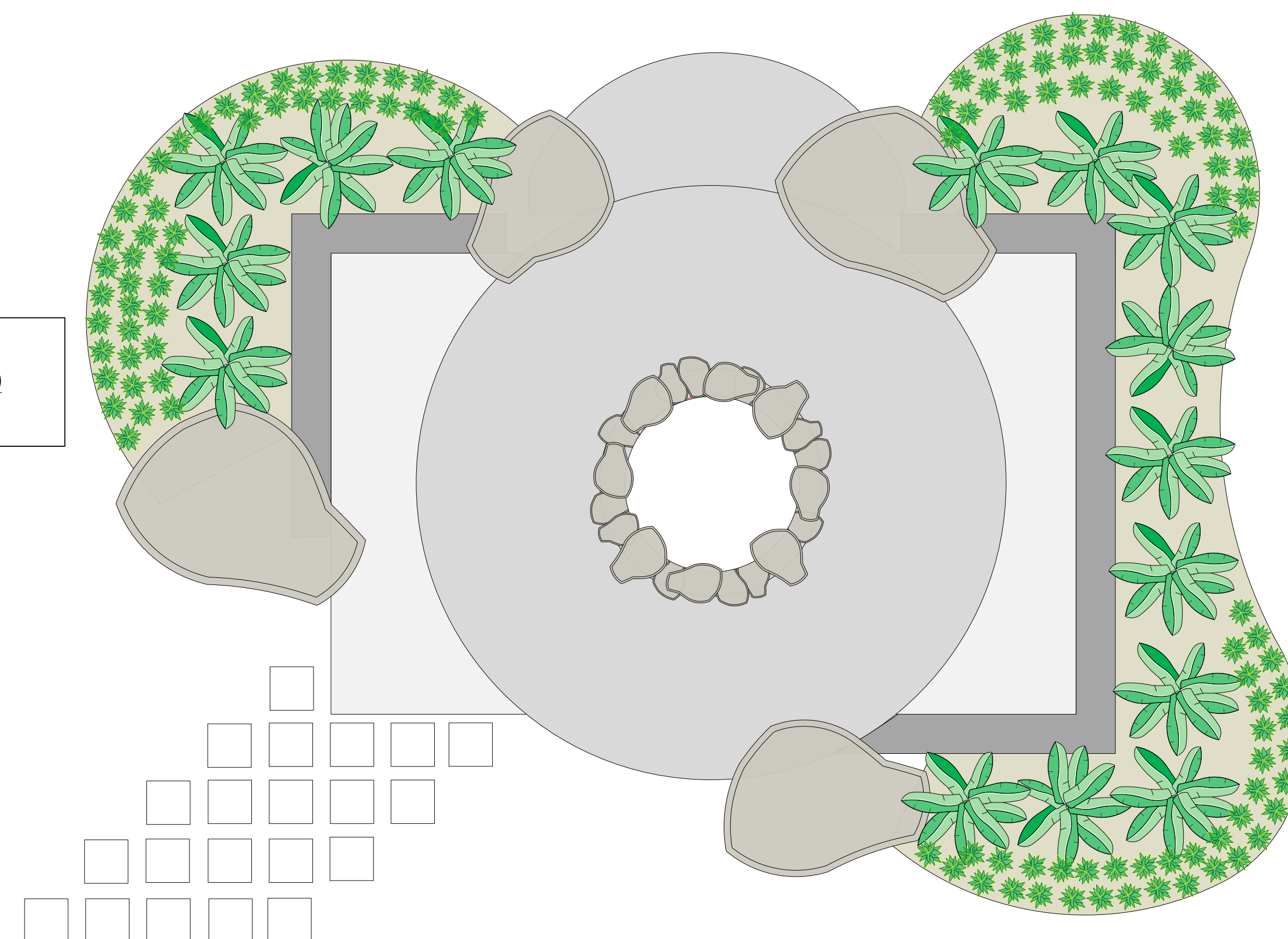
Mature Height:	3-5 ft.
Mature Width:	6-10 Ft.
Sunlight:	Full Sun
Growth Rate:	Slow
Botanical Name:	Pinus mugo var. pumilio
Does Not Ship To:	AZ,OR
Grows Well In Zones:	2-8 outdoors
Your Growing Zone:	8

Dwarf Mugo Pine



Color:	Yellow
Season:	Summer
Height:	1-3 ft
Exposure:	Sun - Partial Shade

Day Lily





HARDINESS ZONE: 5-9
MATURE HEIGHT: 50 to 60 feet
MATURE WIDTH: 30 to 40 feet
CLASSIFICATION: Broad Leaved deciduous tree, Shade Tree
SUNLIGHT: Full Sun
HABIT: Upright, Tall
FOLIAGE: Glossy Green, golden orange color
FLOWER COLOR: Inconspicuous
PRUNING SEASON: No pruning needed
SOIL CONDITION: Any well drained soil
WATER REQUIREMENTS: Water well until established
USES: Tolerates all soil types and full sun. Will adapt to drier sites once established.

Willow Oak



Height: 40 to 50 feet
Spread: 35 to 50 feet
Crown uniformity: Irregular
Crown shape: vase, round
Crown density: moderate
Growth rate: moderate
Texture: fine

Chinese Elm

An excellent tree that is surprisingly under-used, Chinese elm possesses many traits which make it ideal for a multitude of landscape uses. A fast-growing, deciduous or evergreen tree, Chinese elm forms a graceful, upright, rounded canopy of long, arching, and somewhat weeping branches which are clothed with one to two and a half-inch-long, shiny, dark green leaves. Some specimens grow in the typical vase-shaped elm form. In colder regions of the country in fall, leaves are transformed into various shades of red, purple, or yellow. The tree is evergreen in the southern extent of its range. The showy, exfoliating bark reveals random, mottled patterns of grey, green, orange, and brown, adding great textural and visual interest, especially to its winter silhouette. Chinese elm can reach 80 feet in height but is more often seen at 40 to 50 feet, making it an ideal shade, specimen, street, or parking lot tree. They look very nice planted in a grove or along a street.



Autumn Blaze – This tree offers **AMAZING Fall Color**. If you've ever wondered... "What is the name of the pretty tree that turns so bright red in the fall?" This is the tree. It has intensely Bright Red Fall Color that lasts and lasts. It is a very Fast Growing tree – it often grows more than 2-4' a year. Disease and Pest Resistant. Makes a wonderful shade tree. As an improved cross between Red Maple (think color) and Silver Maple (think speed) – this tree is the best of the best. It's one of the most popular varieties of Maples in the United States. It has won numerous Tree of the Year awards. This tree has long lasting, orange-red fall color, an upright, uniform branching habit and a rapid growth rate. Thrives in warm climates extending well into the deep south and west; Autumn Blaze can tolerate most soil conditions, including clay soils. Give it regular water for best results, although with well-drained soil it can tolerate occasional drought and wet soils for a brief period of time.

Absolutely stunning deep red leaves in the fall! Stems turn a red color in winter, making them interesting even when dormant.

For the best fall color, plant in full sun. Grows to about 50' with a spread of about 40'. Give your tree at least 20 feet of space away from driveways, walkways or patios. Zones 4-9.

Tree Size: Bare-root 4-5' with 1/2" Caliper.

Autumn Blaze Red Maple



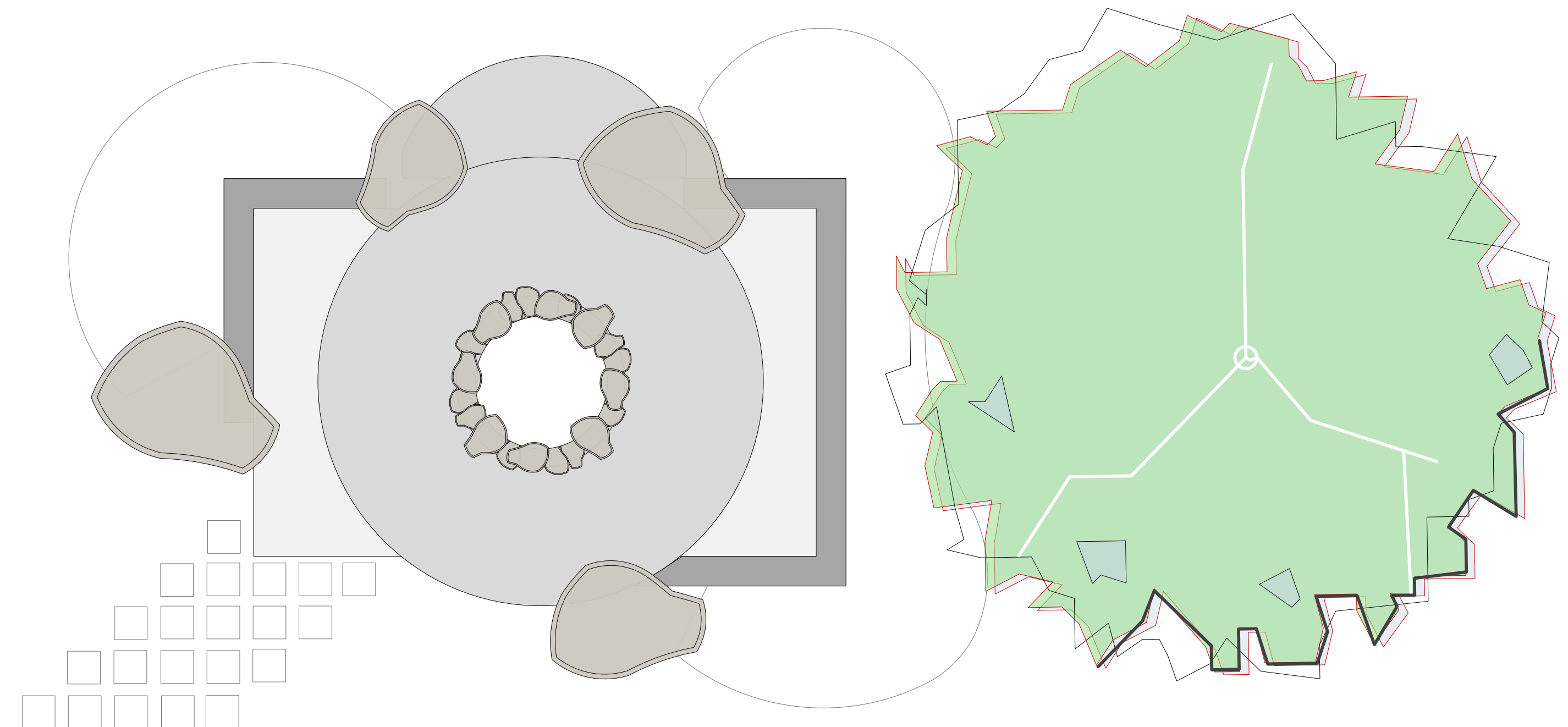
Size	Reaching 30' to 40' (9m to 12m) tall. Width is equal to, or greater than the height.
Environment	Full sun. Tolerant of drought, heat, wind and pollution. Prefers a soil with a neutral to slightly alkaline pH, but does well in slightly acidic soils as well.
Key Features	Green leaves in summer producing yellow panicles of flowers. In autumn leaves change briefly yellow and pale orange.

Golden Rain Tree



Mature Height:	40-50 ft.
Mature Width:	25-40 ft.
Sunlight:	Full-Partial
Growth Rate:	Moderate
Botanical Name:	Prunus x yedoensis
Does Not Ship To:	AZ,CA,WA
Grows Well In Zones:	5-8 outdoors
Your Growing Zone:	8

Yoshino Cherry





HARDINESS ZONE:	6-9
MATURE HEIGHT:	4 to 6 feet left unpruned
MATURE WIDTH:	5 to 6 feet
CLASSIFICATION:	Broad leaved evergreen shrub
SUNLIGHT:	Full sun to part shade
HABIT:	Densely branched, spreading
FOLIAGE:	Dark green evergreen leaves
FLOWER COLOR:	White fragrant flowers that produce black fruit
PRUNING SEASON:	Prune in spring after flowering
SOIL CONDITION:	Any well drained soil
WATER REQUIREMENTS:	Water well until established
USES:	Extremely attractive when used as in the mixed border, foundation, or planted in rows, hedges, well as a hedge

Otto Luyken Laurel



- Big blooms, small plant.
- Space-saving! Perfect for small spaces.
- Droop-free stems - enjoy upright flowers all summer long, even after rain storms.
- Native to North America.
- Zones 3-8, sun/part sun, 2.5' tall x 2.5' wide at maturity.

Hydrangea 'Wee White'



Mature Height:	1-2 ft.
Mature Width:	3-4 ft.
Sunlight:	Full-Partial
Growth Rate:	Slow
Botanical Name:	Gardenia jasminoides 'Radicans'
Does Not Ship To:	AZ
Grows Well In Zones:	7-10 outdoors
Your Growing Zone:	8

Dwarf Radicans Gardenia



Bloom/Feature	Blue-green cascading foliage on a pest and disease resistant, low water evergreen shrub. Compact habit.
Evergreen or Deciduous?	Evergreen
Plant Hardiness	Hardy to 0°F to 10°F
Key Features	Compact Habit, Disease / Pest Resistance, Drought Tolerance, Easy Care, Heat Tolerance, Returns Year After Year, Upright Habit
Flowering Season	None
Uses	Accent, Border, Container, Hedge, Low Hedge, Mass Planting, Slope
Water Needs	Medium
Fertilize	Feed throughout growing season
Pruning	Shape in early spring before first flush
Planting Instructions	<ul style="list-style-type: none"> • Water before planting • Plant in full sun to part shade • Dig hole 2X the width of pot • Plant 1-2" above ground soil level, backfill hole with soil • Water deeply to settle, then add more soil if needed • Mulch 1-2" deep around plant, avoiding area closest to stem

Distylium



Mature Height:	3-4 ft.
Mature Width:	4-5 ft.
Sunlight:	Full-Partial
Growth Rate:	Slow
Botanical Name:	Thuja occidentalis 'Hetz Midget'
Does Not Ship To:	AZ, OR
Grows Well In Zones:	2-7 outdoors
Your Growing Zone:	8

Arborvitae



Genus	Daphne
Species	odora
Variety	'Aureomarginata Alba'
Item Form	Trade Galion (3qt)
Zone	7 - 9
Bloom Start to End	Late Winter - Early Spring
Height	4 ft - 5 ft
Width	4 ft - 5 ft
Additional Characteristics	Evergreen, Fast Growing, Flower, Fragrance, Variegated
Bloom Color	White
Foliage Color	Dark Green, Gold, Variegated
Light Requirements	Part Shade
Moisture Requirements	Moist, well-drained
Resistance	Deer Resistance
Soil Tolerance	Normal, loamy
Uses	Specimen, Beds, Border, Foliage Interest, Ornamental

Daphne



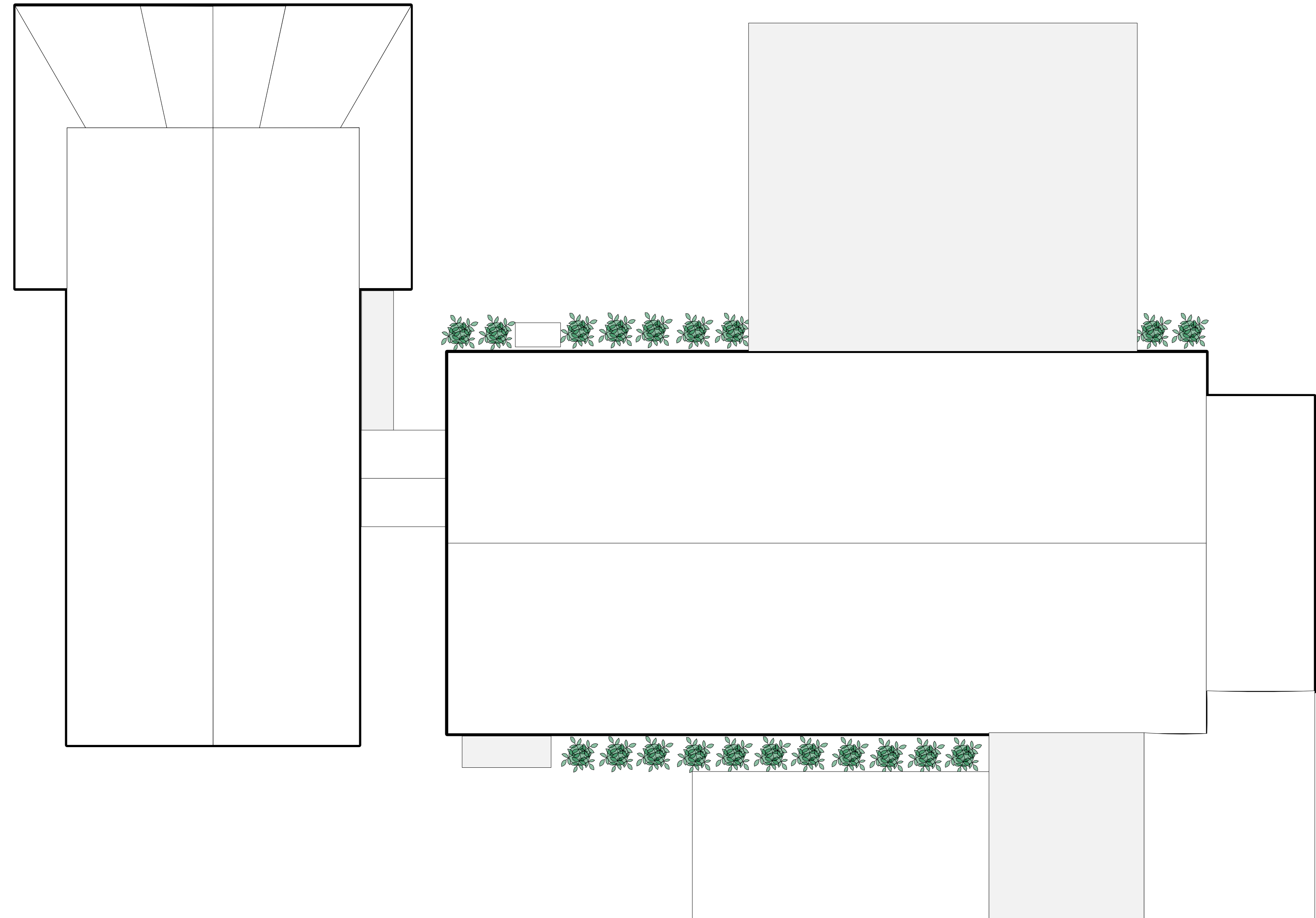
Mature Height:	3-4 ft.
Mature Width:	3-4 ft.
Sunlight:	Full Sun
Growth Rate:	Moderate
Botanical Name:	Ligustrum sinense
Does Not Ship To:	AZ,OR
Grows Well In Zones:	6-10 outdoors
Your Growing Zone:	8

Sunshine Ligustrum



Botanical Name	Clethra alnifolia 'Crystalina'
Type	Deciduous
Mature Height	30 - 36 inches
Mature Spread	30 - 36 inches
Sun Exposure	Full Sun
Soil	Well Drained
Moisture	Medium
Growth Rate	Medium
Foliage Color	Green
Fall Color	Yellow
Pollinator Friendly	Yes
Pruning Time	Early Spring
Fragrant	Yes

Clethra Sugartina





Attractive Bark
 Bird Friendly
 Deer Resistant

BOTANICAL NAME
Cercis canadensis

OUTDOOR GROWING ZONE
4-9

MATURE HEIGHT 20-30
MATURE WIDTH 20-30

SUN NEEDS
Full Sun, Partial Sun

DOES NOT SHIP TO
AK, CA, HI, PR

Eastern Redbud



HARDINESS ZONE: 6-10

MATURE HEIGHT: 25 to 30 feet

MATURE WIDTH: 20 to 25 feet

CLASSIFICATION: Broad leaved deciduous tree, summer flowering

SUNLIGHT: Full Sun

HABIT: Upright, umbrella shaped canopy

FOLIAGE: Dark green, brilliant orange to scarlet fall color

FLOWER COLOR: Inconspicuous

PRUNING SEASON: No pruning needed

SOIL CONDITION: Any well drained soil

WATER REQUIREMENTS: Water well until established

USES: Tolerates moist soil and full sun. Full sun brings out the best fall color. Will adapt to drier sites

Chinese Pistache Tree



HARDINESS ZONE: 5-9

MATURE HEIGHT: 15 to 20 feet

MATURE WIDTH: 20 to 25 feet

CLASSIFICATION: Broad Leaved deciduous tree, Spring flowering

SUNLIGHT: Full Sun

HABIT: Upright, dome shaped canopy

FOLIAGE: Dark-green

FLOWER COLOR: Pure white, very floriferous

PRUNING SEASON: No pruning needed

SOIL CONDITION: Any well drained soil

WATER REQUIREMENTS: Water well until established

USES: Tolerates moist soil and full sun. Add to native and wild gardens for habitat and seasonal interest. Will adapt to drier sites

Chinese Fringe Tree



Easy Care
 Fall Color

BOTANICAL NAME
Prunus subhirtella var. pendula

OUTDOOR GROWING ZONE
5-8

MATURE HEIGHT 15-25
MATURE WIDTH 15-20

SUN NEEDS
Full Sun

DOES NOT SHIP TO
AK, CA, HI, PR

Yoshino Weeping Cherry



Mature Height: 20-30 ft.

Mature Width: 20-30 ft.

Sunlight: Full Sun

Growth Rate: Moderate

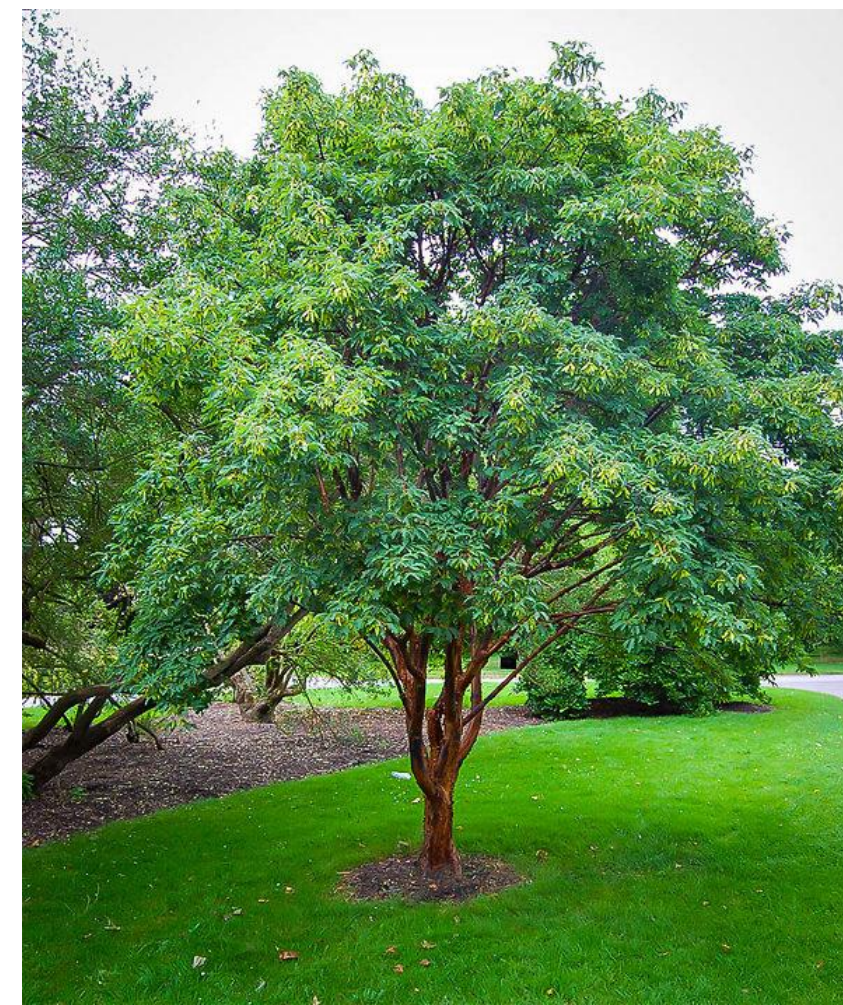
Botanical Name: Prunus 'Okame'

Does Not Ship To: AZ,CA,WA

Grows Well In Zones: 6-9 outdoors

Your Growing Zone: 8

Okame Cherry



BOTANICAL NAME
Acer griseum

OUTDOOR GROWING ZONE
4-8

MATURE HEIGHT 20-30
MATURE WIDTH 15-25

SUN NEEDS
Full Sun, Partial Sun

DOES NOT SHIP TO
AK, CA, HI, PR

Paperbark Maple



Deer Resistant
 Drought Tolerant

Mature Height: 10-15 Ft.

Mature Width: 15-20 ft.

Sunlight: Full-Partial

Growth Rate: Fast

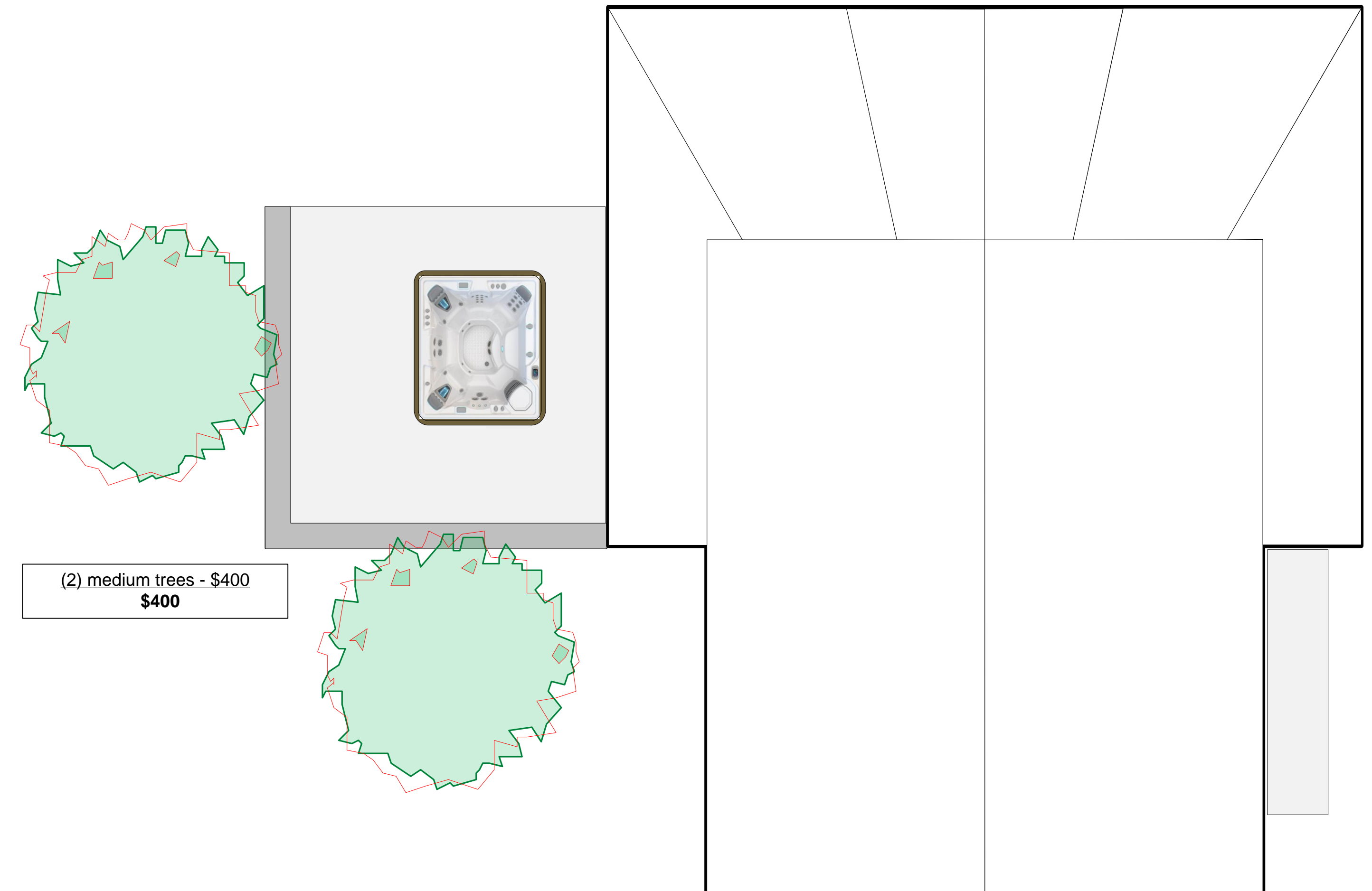
Botanical Name: Albizia julibrissin 'EH Wilson'

Does Not Ship To: AZ,FLOR

Grows Well In Zones: 5-10 outdoors

Your Growing Zone: 8

Mimosa Tree





Attracts Butterflies	Bird Friendly	Easy Care
BOTANICAL NAME Viburnum plicatum var. tomentosum 'Shasta'		
OUTDOOR GROWING ZONE 5-8		
MATURE HEIGHT 4-6	MATURE WIDTH 8-12	
SUN NEEDS Full Sun, Partial Sun		
DOES NOT SHIP TO AK, CA, HI, PR		

Shasta Viburnum



Mature Height:	6-8 ft.
Mature Width:	6-8 ft.
Sunlight:	Full-Partial
Growth Rate:	Moderate
Botanical Name:	Ilex verticillata 'Southern Gentleman'

Shasta Viburnum



Mature Height:	6-10 ft.
Mature Width:	6-10 ft.
Sunlight:	Full-Partial
Growth Rate:	Moderate
Botanical Name:	Rhododendron catawbiense
Does Not Ship To:	AZ
Grows Well In Zones:	4-8 outdoors
Your Growing Zone:	8

Lavender Rhododendron



JSDA Zone	Zone 10, Zone 11, Zone 7, Zone 8, Zone 9
Recommended Light Conditions	Filtered/Partial Sun, Partial Shade
Approximate Mature Height	8'
Approximate Mature Width	8'
Bloom Colors	White
Colors (Foliage)	Green/Lime
Growth Habit	Tall, Upright
Location	Exterior

Japanese Fatsia



Mature Height:	6-8 ft.
Mature Width:	6-8 ft.
Sunlight:	Full-Partial
Growth Rate:	Moderate
Botanical Name:	Ligustrum sinense 'Variegata'
Does Not Ship To:	AZ,OR
Grows Well In Zones:	7-10 outdoors
Your Growing Zone:	8

Variegated Privet



HARDINESS ZONE:	5-8
MATURE HEIGHT:	6 to 8 feet
MATURE WIDTH:	4 to 5 feet
CLASSIFICATION:	Broad leaved evergreen shrub
SUNLIGHT:	Full sun to part shade
HABIT:	Densely branched, spreading
FOLIAGE:	Dark green evergreen leaves
FLOWER COLOR:	Small white flowers that produce pink berries
PRUNING SEASON:	Prune in spring after flowering
SOIL CONDITION:	Any soil condition
WATER REQUIREMENTS:	Water well until established
USES:	Privacy screen, hedge, or focal point

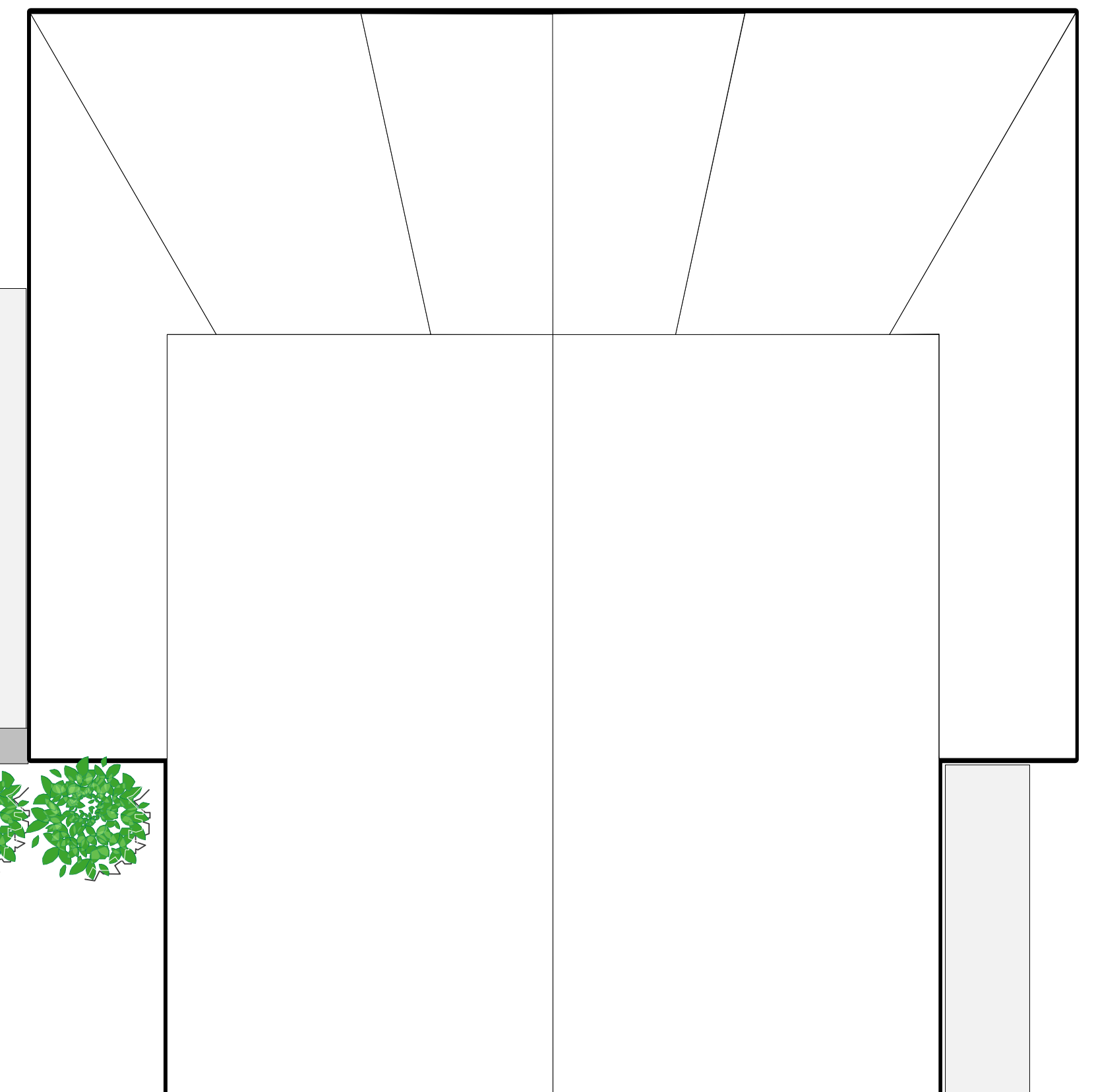
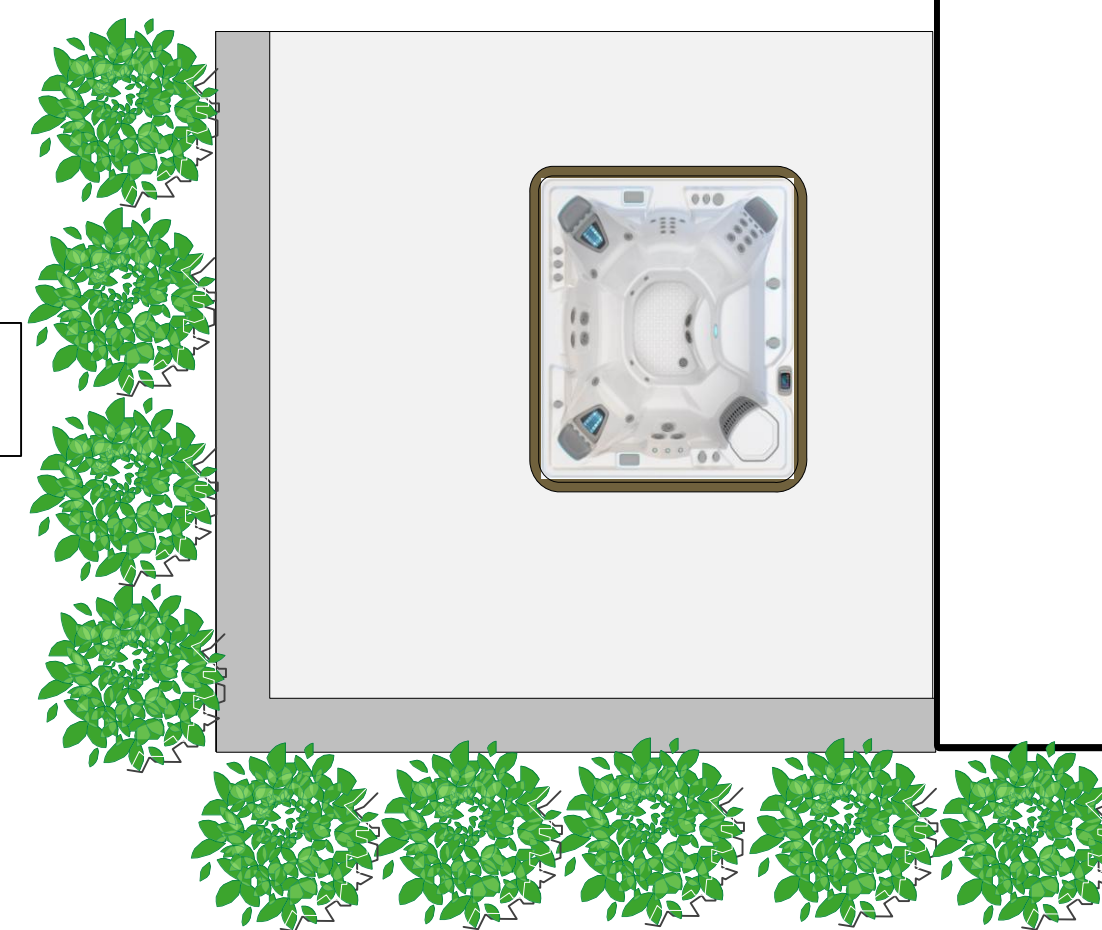
Euonymus



Botanical Name	Buddleia davidii 'White Profusion'
Form	Shrub
Hardiness Zone	5-10
Flowering Time	Late summer to fall
Light Requirements	Full Sun, Partial Shade
Flower Color	Clear white with a golden throat
Flower Form	Long terminal panicles up to 6-8' long of a mass of tiny star-like flowers.
Foliage Type	Clean grey green, lanceolate leaves 6-8" long, white and glabrous beneath.
Growth Rate	Fast once established, which takes approximately 6-8 weeks.
Height/Habit	5 - 10 feet
Spread	5 - 10 feet

Butterfly Bush 'Jumbo White'

(9) privacy plants - \$450
\$450





Mature Height:	3-4 ft.
Mature Width:	3-4 ft.
Sunlight:	Full-Partial
Growth Rate:	Moderate
Botanical Name:	Rosa 'Radtko'
Does Not Ship To:	AZ
Grows Well In Zones:	5-10 outdoors
Your Growing Zone:	8

Knockout Rose



- Add season-long interest with this deer-resistant reblooming weigela.
- Makes a stunning flowering hedge!
- Pink blooms attract pollinators.
- Zones 4-8, sun, 5' tall x 5' wide at maturity.

Pink Weigela



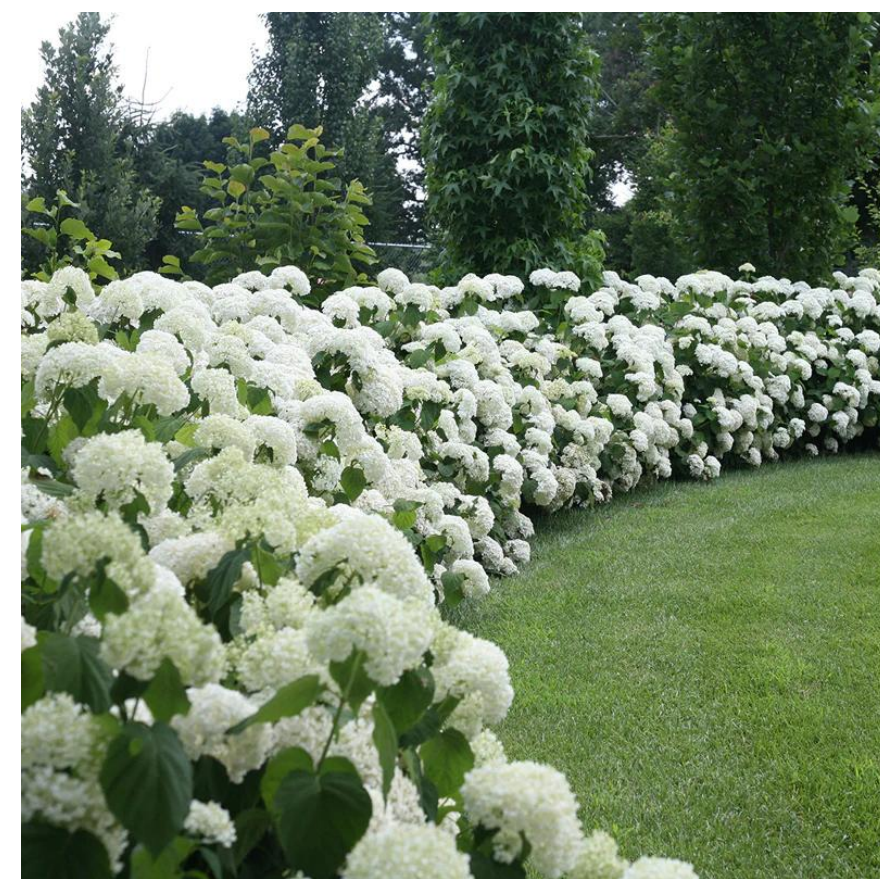
Color:	Yellow
Season:	Summer
Height:	1-3 ft
Exposure:	Sun - Partial Shade

Day Lily



Mature Height:	4-5 ft.
Mature Width:	4 ft.
Sunlight:	Full-Partial
Growth Rate:	Slow
Botanical Name:	Azalea x 'Conlec'
Does Not Ship To:	AZ
Grows Well In Zones:	6-10 outdoors
Your Growing Zone:	8

Autumn Royalty Azalea



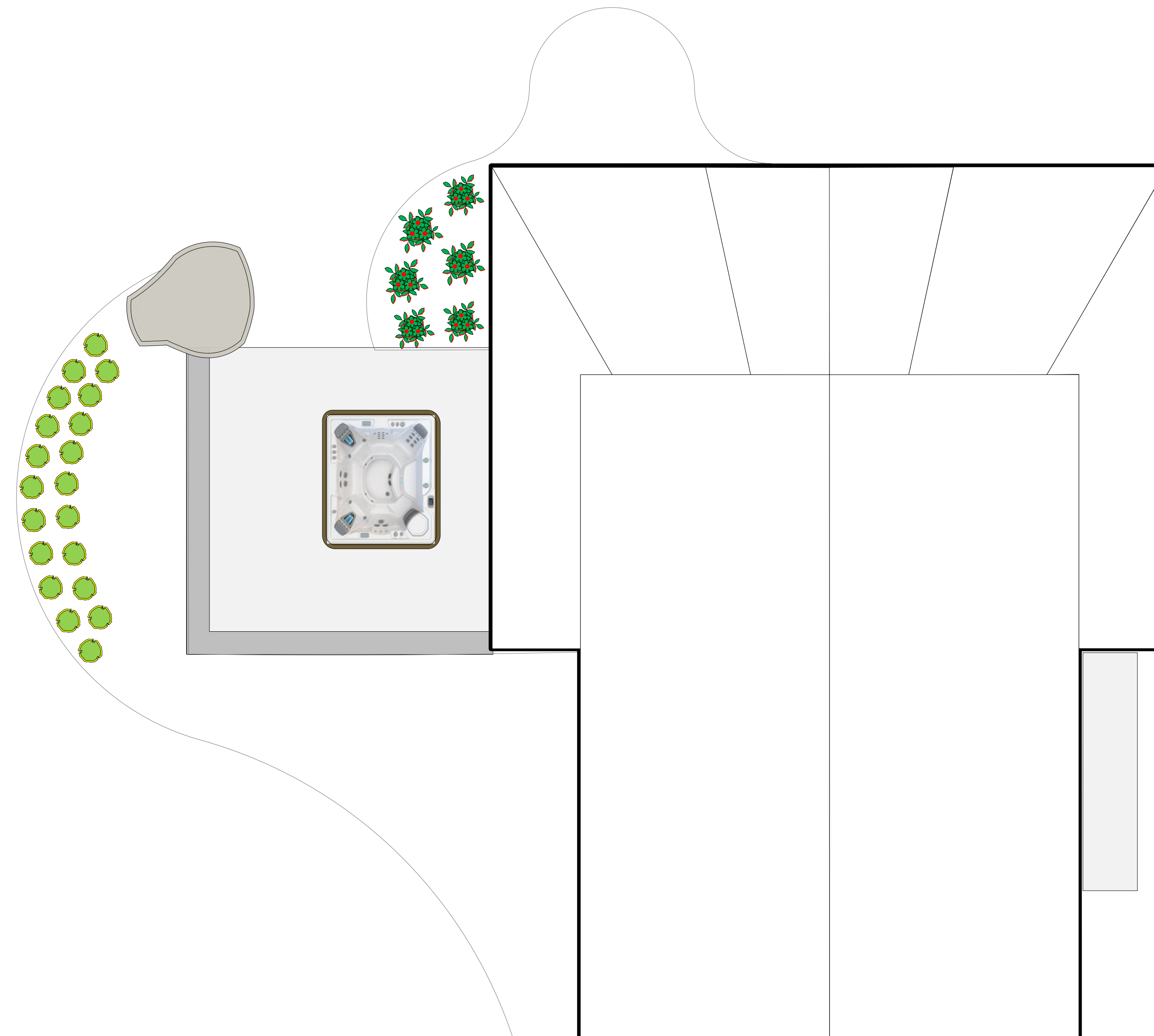
- Massive, pristine white flowers reach 12 inches!
- White flowers fade to chartreuse green.
- Flowers last for over four weeks when cut.
- Easy to grow native shrub.
- Zones 3-8, sun/part sun, 5' tall x 5' wide at maturity.

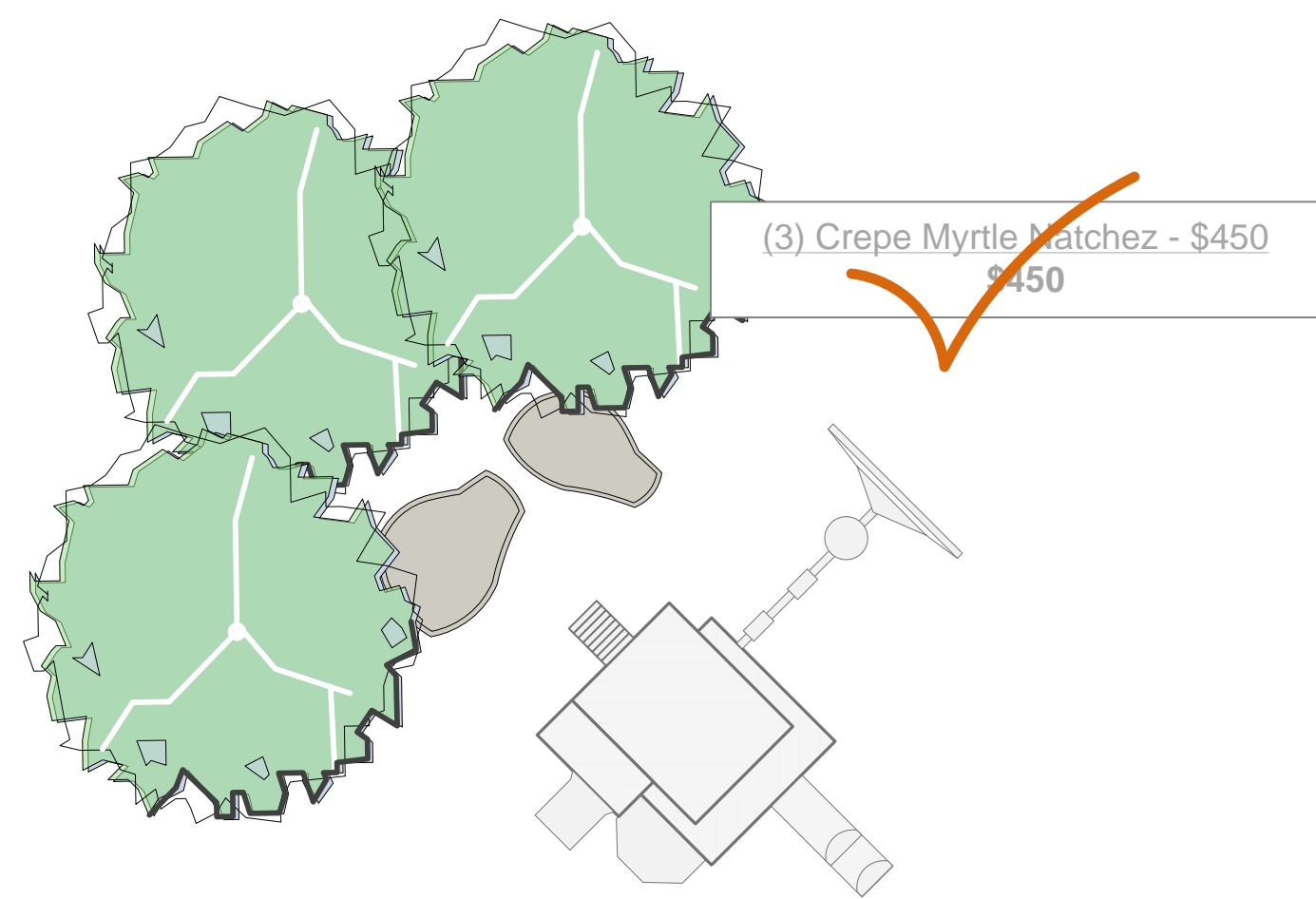
Snowball Hydrangea



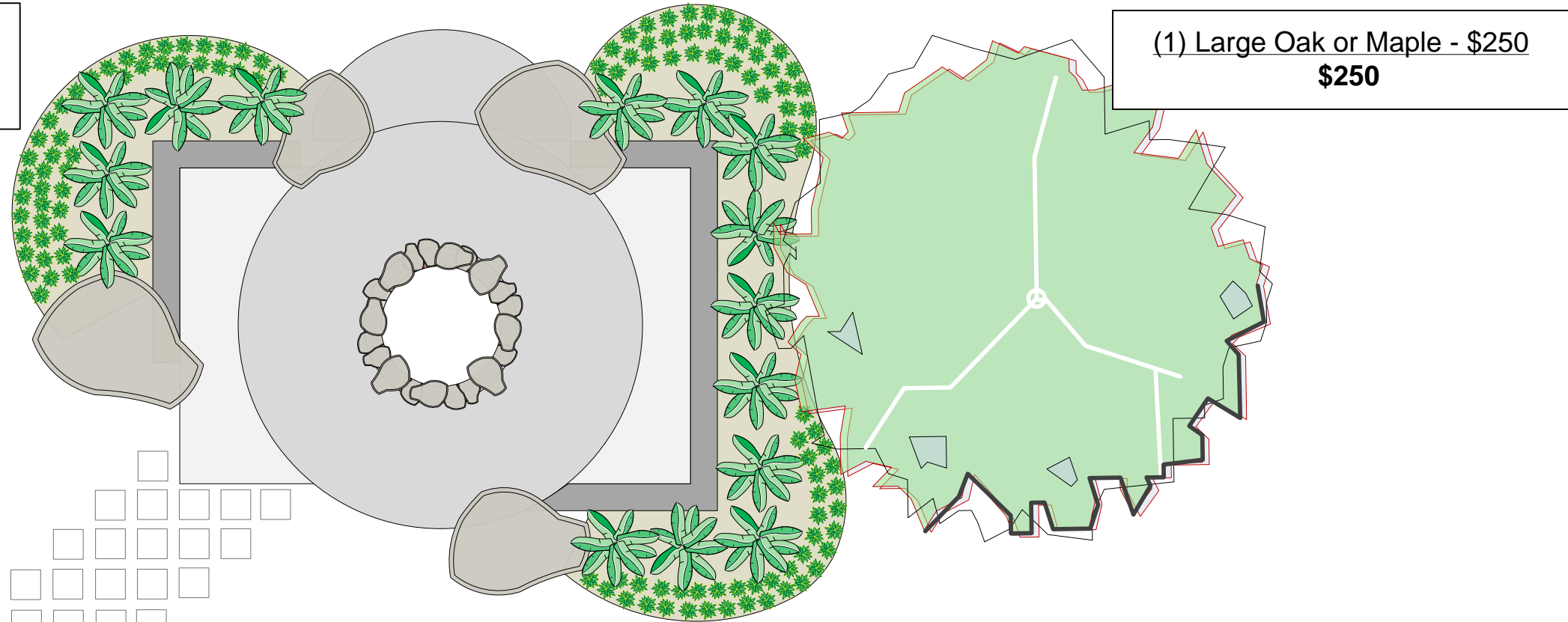
Botanical Name	Yucca filamentosa 'Color Guard'
Mature Height	3 feet
Mature Spread	3 feet
Sun Exposure	Full Sun
Soil	Well Drained
Moisture	Low
Growth Rate	Medium
Flower Color	Broad Leaved Evergreen
Foliage	Broad Leaved Evergreen
Foliage Color	Variegated
Pollinator Friendly	Yes

Yucca



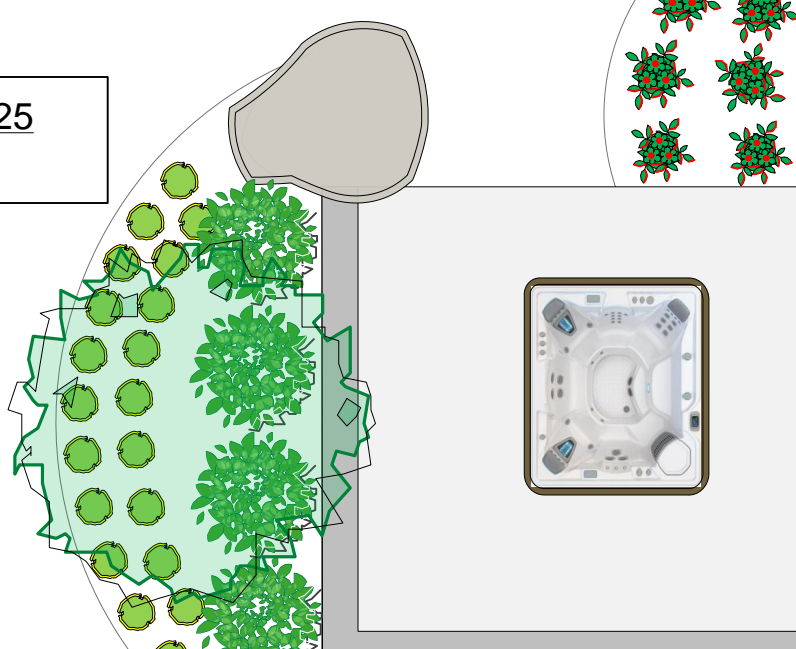


(4) trays of Liriope - \$160
(5) medium shrubs - \$250
\$370



(7) medium color shrubs - \$210
\$210

(21) small color shrubs - \$525
\$525



(9) privacy plants - \$450
\$450

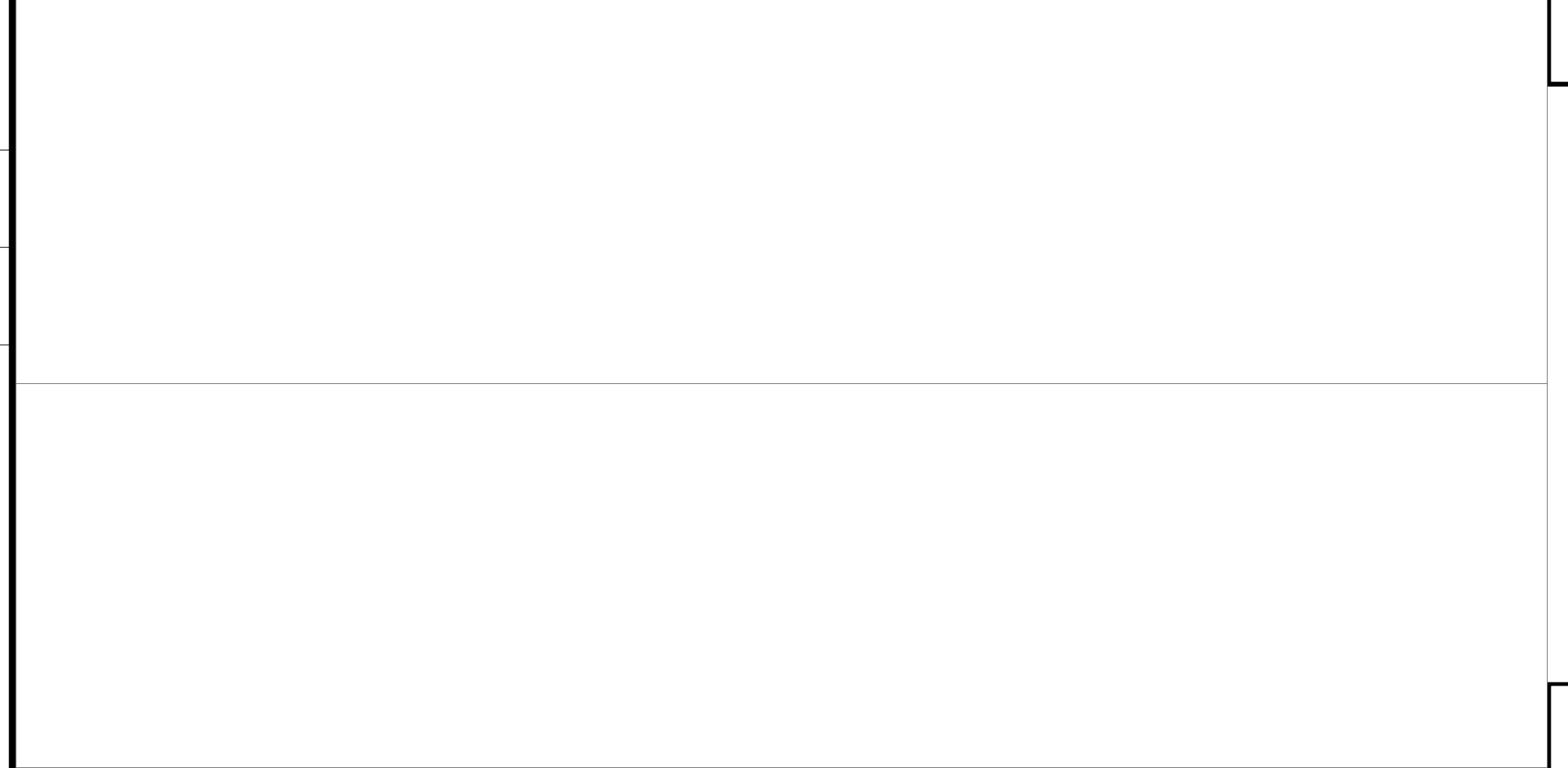
(2) medium trees - \$400
\$400

(16) trays of dwarf mondo - \$560
(1) Jap Maple - \$180
(1) smaller 3' boulder - \$75
\$815

(16) trays of dwarf mondo - \$560
(1) Jap Maple - \$180
(1) smaller 3' boulder - \$75
\$815

(8) trays of Liriope - \$320
(9) medium shrubs - \$450
\$690

(20) foundation shrubs - \$800
\$800



LANDSCAPE PHASE 1 PLANT COST

- (20) Foundation Shrubs - \$800
- (9) Privacy Plants - \$450
- (2) Medium Trees - \$400
- (12) Trays of Liriope - \$480
- (32) Trays of Dwarf Mondo - \$1,280
- (2) Red Jap. Maples - \$360
- (2) Medium Boulders - \$120
- ✓ (3) Crepe Myrtle 'Scarlet Red' - \$450
- (21) Small Color Shrubs - \$525
- (7) Medium Color Shrubs - \$210
- (1) Oak or Maple at FirePit - \$250
- (14) Plants around FirePit - \$670

\$5,545